



**Sonoma
Water**

Laguna-Mark West Creek Watershed Master Restoration Planning Project - High Priority Project

Dave Cook
Senior Environmental Specialist

    sonomawater.ca.gov



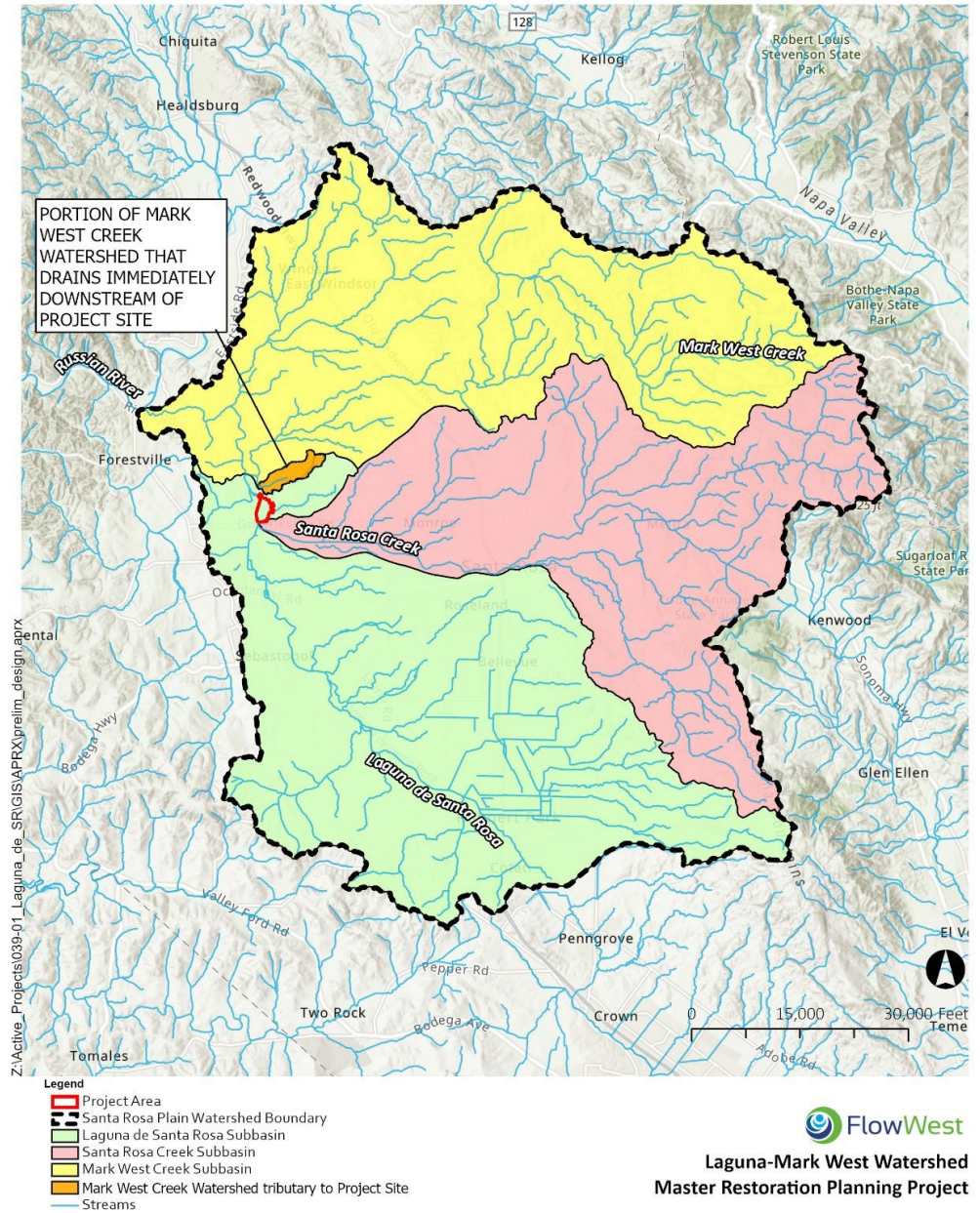
Laguna High Priority Project

- Laguna-Mark West Creek Watershed Master Restoration Planning Project
 - High Priority Project
 - First project along Laguna de Santa Rosa
- Lafranchi property
 - Historically, riparian forest and freshwater marsh
 - Currently, farmed wetland prone to winter flooding
 - Restoration – realign historic channel and reestablish wetland vegetation.



Watershed

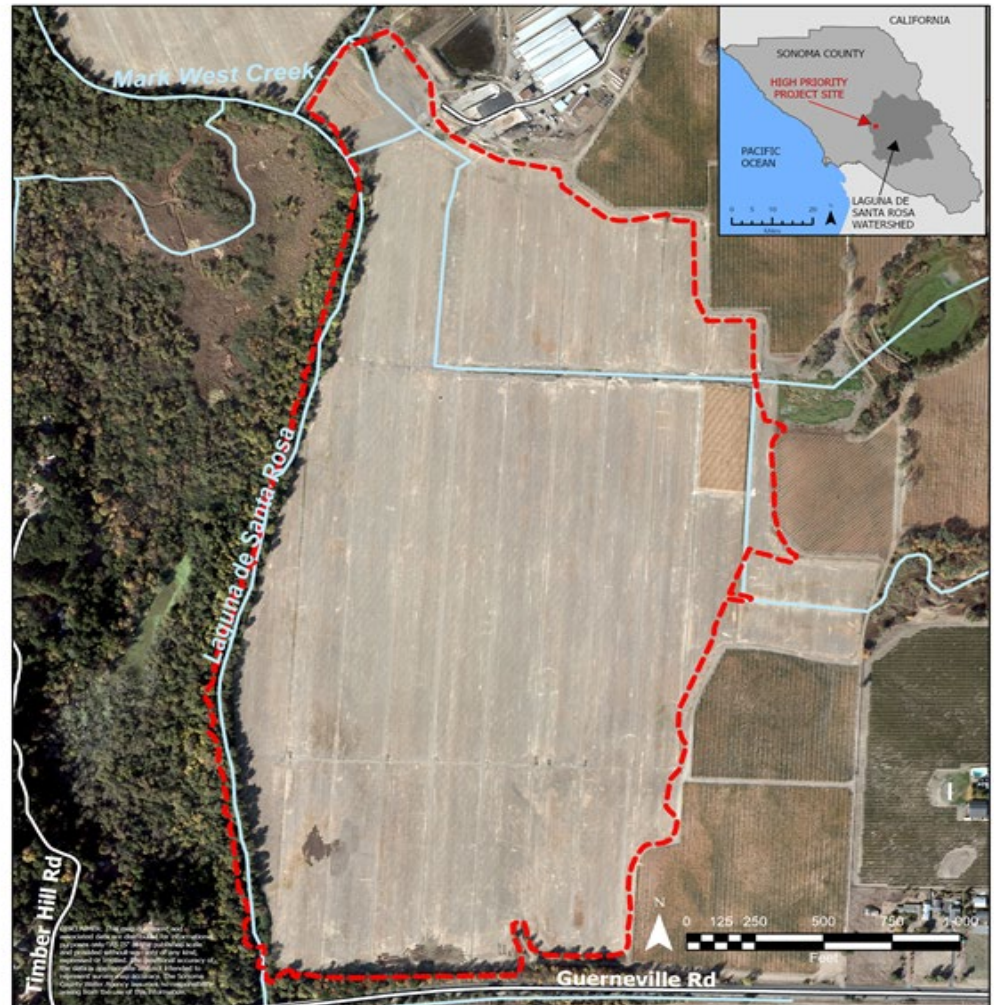
- Laguna
- Between Santa Rosa and Mark West creeks



Location

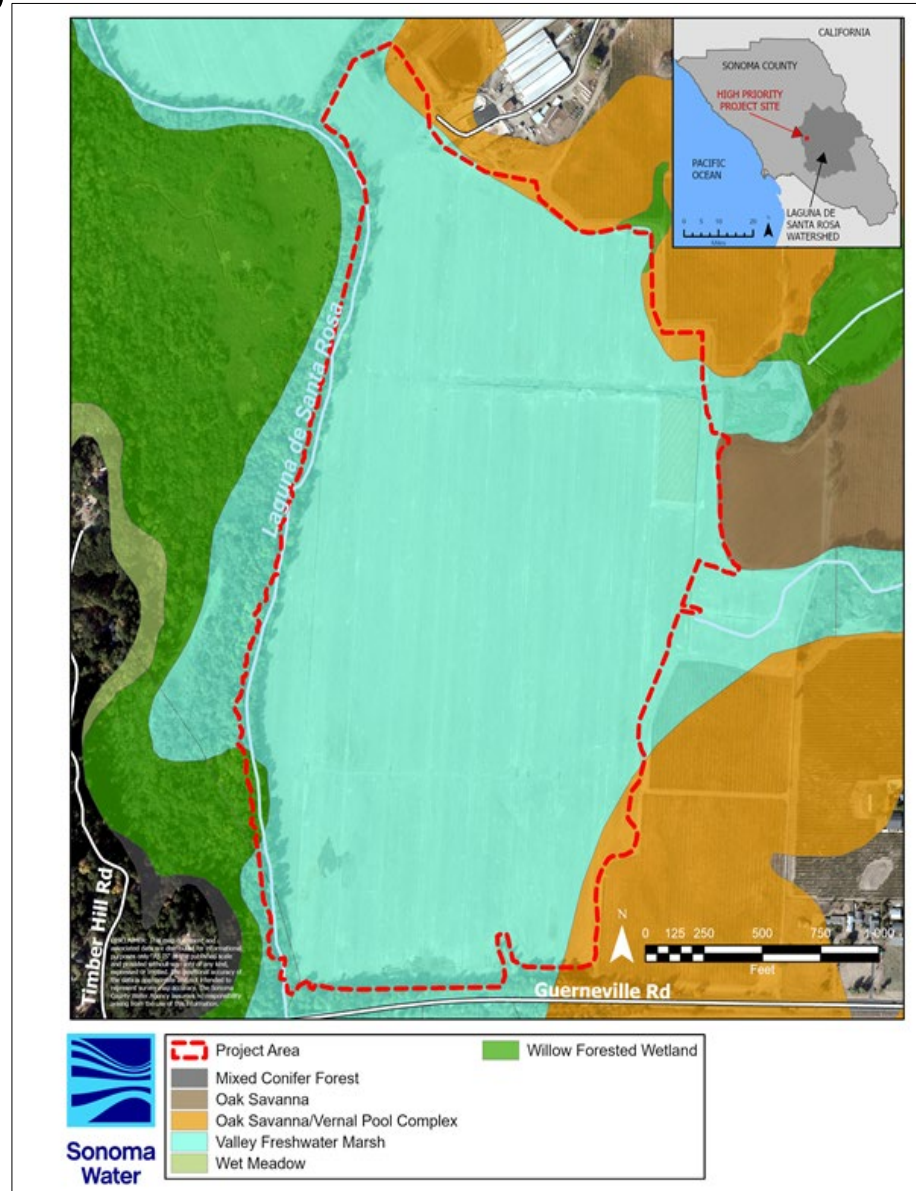
- West of Santa Rosa
- North of Guerneville Rd
- 119 acres

Laguna-Mark West Master Restoration Plan, High Priority Project Site



Historic Habitats

- Mostly freshwater marsh
- Riparian forest along Laguna
- Some oak savannah



Flooding

- 100-yr floodplain
- Inundated winter and spring
- Laguna channel overtopped
- Difficult to farm



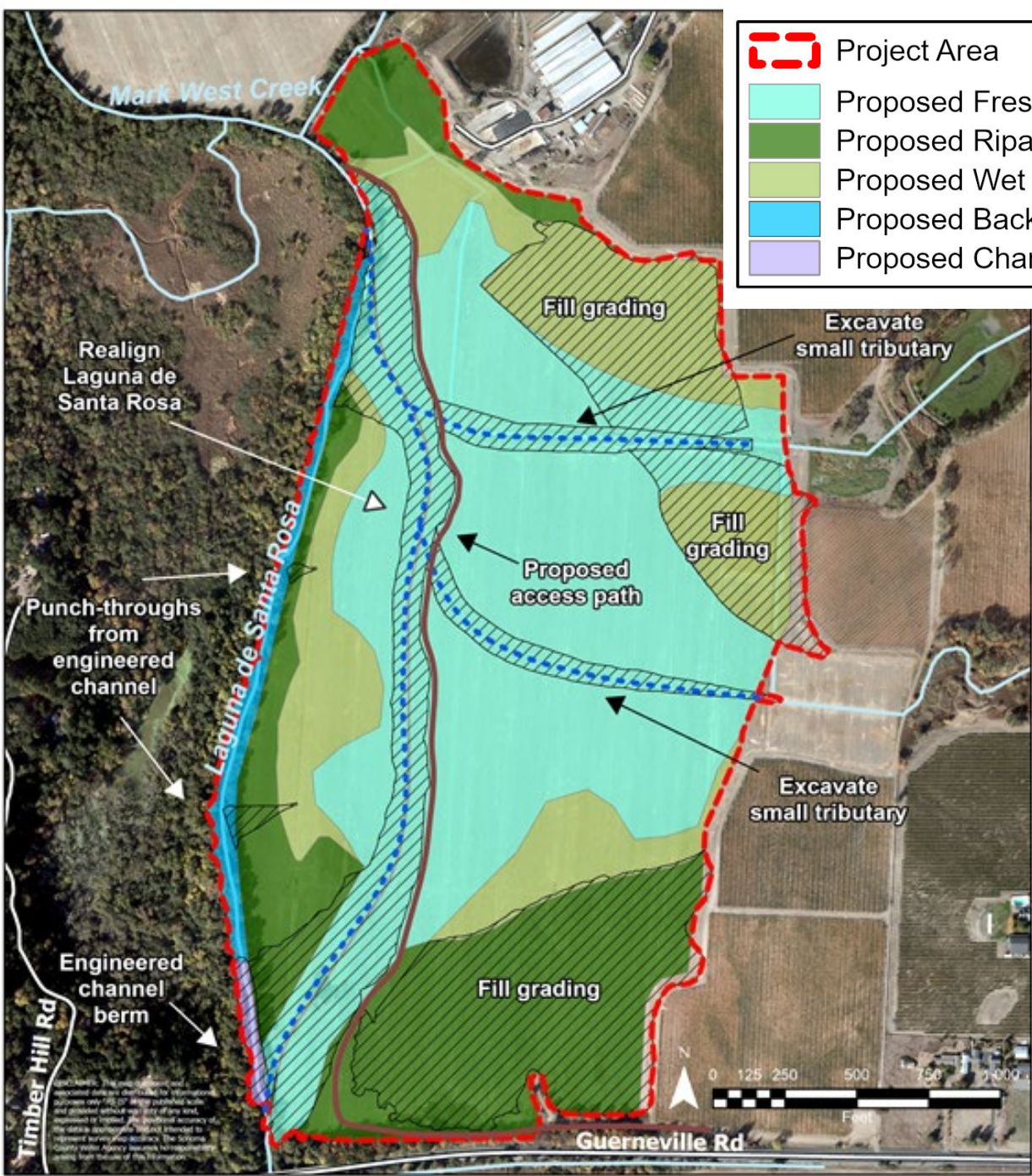
Farmland



Laguna High Priority Project

- Restore a 3,200-foot-long reach of the Laguna channel and floodplain (119 acres)
 - Reestablish historical alignment of the Laguna channel
 - Create engineered channel backwater
 - Reconnect two small tributaries to the new historical alignment of channel
 - Revegetate project site with native wetland plants

-  Project Area
-  Proposed Freshwater Marsh
-  Proposed Riparian/Mixed Riparian Forest
-  Proposed Wet Meadow
-  Proposed Backwater
-  Proposed Channel Plug



Project Status

- Project description completed
- Initial Study completed for California Environmental Quality Act (CEQA) compliance
- Environmental permit applications prepared



Sonoma
Water